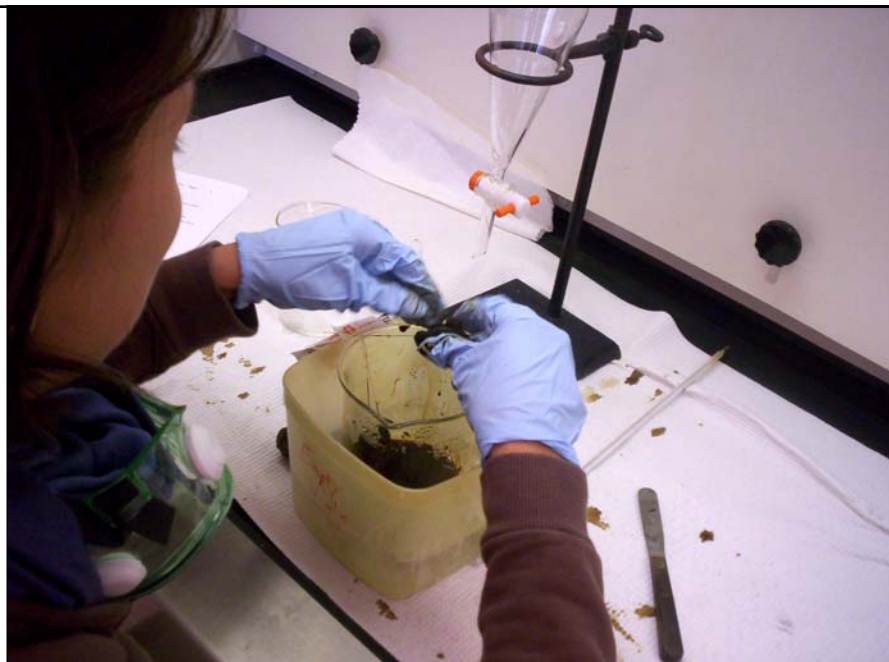


Caffeine from Tea

Dominican University
Fall 2008



Hand-squeezing tea bags





Spoon-aided squeezing tea bags



Spoon-aided squeezing tea bags



Spoon-aided squeezing tea bags



Using the spatula to squeeze tea bags against the side of the beaker



Using the spatula to squeeze tea bags against the side of the beaker

If you rupture
your tea bags
you will need to
filter them



**If you rupture
your tea bags
you will need to
filter them**



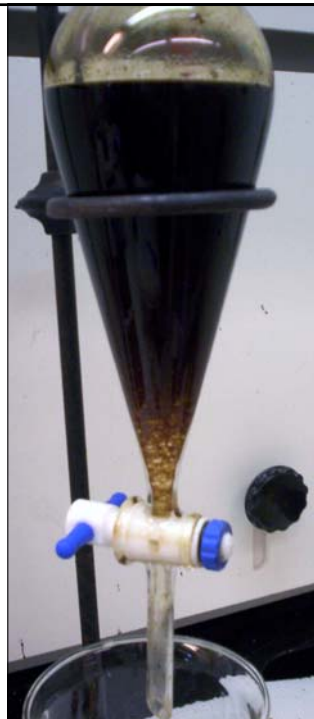
Emulsion!



Emulsion is starting to break up



Emulsion is starting to break up



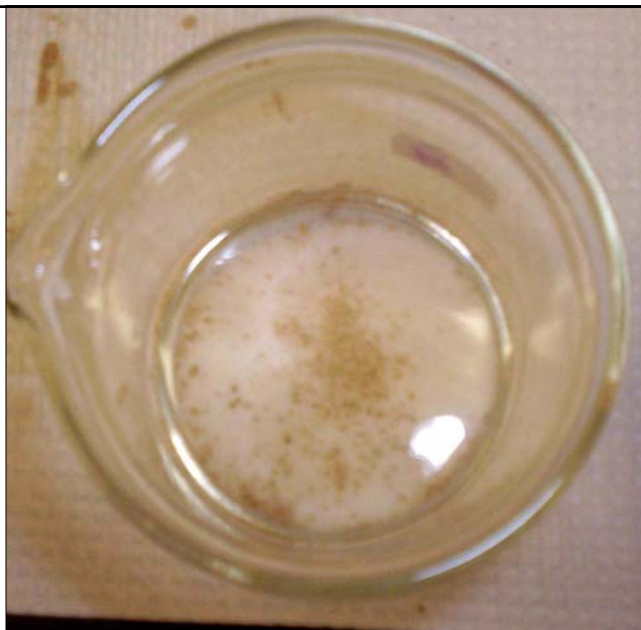
**Emulsion is
breaking up**



**Emulsion is
breaking up**



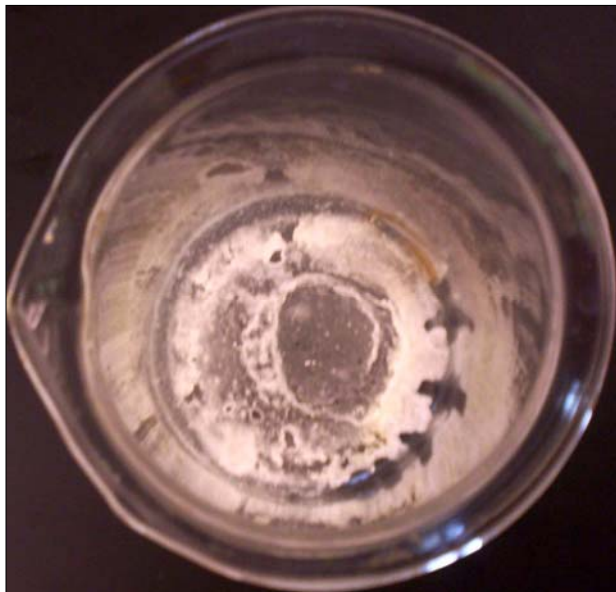
Poke the emulsion with a glass rod to facilitate separation of layers



Sodium Carbonate (white solid) soaks up excess tea (brown spots)



Beaker-within-a-beaker method of evaporating dichloromethane



Crude Caffeine